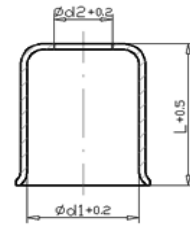


Technisches Datenblatt Hülsen:



Schmittberg Metallwerke
Ziehen · Biegen · Stanzen



Innen d1	Länge L	Loch d2
3.1	5	1.5
3.5	5	2.0
B 4.1	11	2.0
4.4	11	2.0
4.7	10	3.3
5.0	5	3.1
B 5.0	12	2.5
5.1	5.7	2.3
5.1	10	2.5
5.1	12	2.4
5.3	10	2.3
B 5.5	12	3.0
5.6	12	3.0
5.6	13	2.5
5.8	6.3	2.3
5.8	12	2.5
B 6.2	12	3.5
6.7	17	5.2
6.7	17	5.5
6.7	24	5.2
6.7	24	5.5
6.8	9	2.8
B 6.9	13	4.0
B 8.0	15	5.0
8.0	17	5.5
8.0	24	5.5
8.3	17	5.2
8.3	24	5.2
9.0	9	6.5
9.0	15	5.5
9.0	17	6.5
9.2	17	5.2
B 9.5	15	6.0
9.7	15	8.0
9.7	24	8.0
10.0	15	6.2
10.0	15	6.5
10.0	15	7.1
10.0	15	7.6
10.0	15	8.2
10.0	17	7.7
10.0	24	8.2
10.2	18	5.3
10.3	19	5.5
10.5	15	6.5
10.5	17	5.0
10.5	17	5.2
11.0	15	7.2
11.0	15	7.7
11.0	15	8.3

Innen d1	Länge L	Loch d2
11.0	17	7.8
11.3	15	7.3
11.5	17	7.0
11.5	23	7.5
11.5	23	7.7
12.0	15	7.5
12.0	15	7.7
12.0	15	8.0
12.0	15	8.6
12.0	15	9.7
12.0	17	7.8
12.0	18	9.0
12.0	20	7.8
12.0	20	8.2
12.0	23	7.7
12.5	16	7.5
12.5	16	8.5
12.5	17	7.0
12.5	18	8.5
12.5	18	9.5
12.5	23	7.8
12.6	18	9.5
13.0	15	7.7
13.0	15	9.8
13.0	17	8.8
13.0	17	10.0
13.0	20	7.8
13.0	20	9.5
13.0	23	7.2
13.5	15	9.8
13.5	17	7.7
13.5	20	9.5
13.5	20	9.8
13.5	23	6.5
14.0	15	10.1
14.0	17	10.0
14.0	17	10.1
14.0	20	9.5
14.0	20	10.5
14.0	23	10.1
14.5	17	8.5
14.5	17	10.5
14.5	19	9.5
14.5	20	9.4
14.5	20	9.5
15.0	17	10.1
15.0	17	11.7
15.0	20	9.5
15.0	20	11.0
15.0	25	9.3

Innen d1	Länge L	Loch d2
15.1	17	9.4
15.5	17	7.8
15.5	20	9.2
15.5	20	11.0
15.5	25	11.0
15.5	25	11.7
16.0	17	11.0
16.0	17	11.5
16.0	20	9.4
16.0	20	11.4
16.0	20	11.5
16.0	20	11.7
16.0	20	12.0
16.0	21	11.0
16.0	25	9.4
16.0	25	11.7
16.5	16	10.5
16.5	17	11.3
16.5	24	10.5
16.5	25	11.8
17.0	20	11.3
17.0	20	11.4
17.0	20	11.5
17.0	20	11.7
17.0	20	12.0
17.0	20	13.5
17.0	21	11.7
17.0	31	11.5
17.5	20	12.0
18.0	20	11.3
18.0	20	13.0
18.0	20	13.5
18.0	20	13.9
18.0	21	13.8
18.0	21	13.9
18.0	24	10.5
18.0	24	13.9
18.0	31	12.2
18.5	20	13.0
19.0	20	13.0
19.0	20	13.4
19.0	20	13.9
19.0	21	13.8
19.0	23	13.0
19.0	25	13.9
19.0	26	13.5
19.0	26	13.9
19.0	26	14.0
19.0	31	11.5
19.5	20	13.5

Innen d1	Länge L	Loch d2
20.0	25	13.9
20.0	25	14.0
20.0	25	14.5
20.0	30	14.5
20.0	30	16.5
20.0	31	13.3
20.0	31	13.5
21.0	26	9.5
21.0	31	13.8
21.0	32	16.5
22.0	25	15.5
22.0	25	16.5
22.0	32	15.0
22.0	32	16.5
22.0	32	16.7
22.0	32	16.8
23.0	25	14.7
23.0	25	16.4
23.0	32	16.5
23.0	32	16.7
23.0	32	17.0
23.5	31	16.6
24.0	25	15.5
24.0	30	11.5
24.0	30	13.3
24.0	32	17.0
24.5	25	18.2x
24.5	32	17.0
25.0	31	10.9
25.8	35	16.0
26.5	32	20.0
26.5	32	20.3
26.5	32	20.5
27.0	35	13.8
27.0	35	19.5
28.0	26	20.5
28.0	32	19.8
28.0	32	20.5
28.0	32	21.5
29.0	34	21.0
29.0	34	24.3
30.5	33	21.0
30.5	33	24.3
30.5	33	24.5
32.0	34	23.7
32.0	34	24.3
33.0	33	25.0
33.0	33	26.0
34.0	34	23.6
34.5	35	26.0